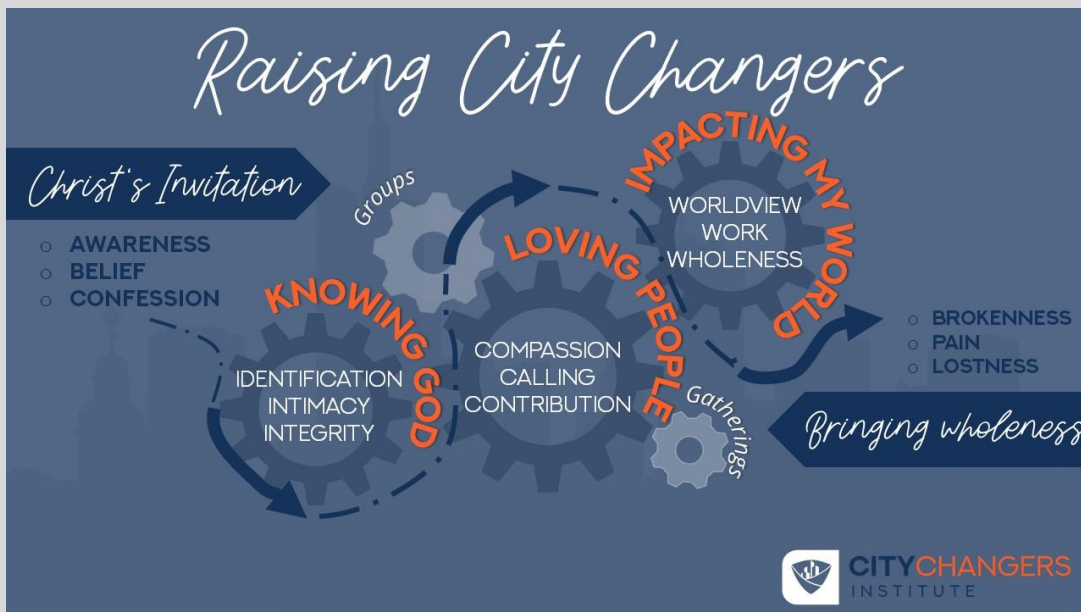


The CITY CHANGERS EQUIPPING PROGRAM
CCEP – Comprehensive Prospectus



Doxa Deo is passionate about transforming cities to places where God reigns. Raising City Changers is core to this mandate.

The CITY CHANGERS EQUIPPING PROGRAM is a 2-year season of accelerated personal growth. CCEP empowers City Changers to discover and implement the outcomes of Doxa Deo’s Discipleship processes. Through CCEP, City Changers will be equipped to engage effectively with the various *ministry processes* and *leadership structures* in their Doxa Deo Campus (or local church). Those who engage in this process will spend time with leaders from across the Doxa Deo Family who will share their insights and experiences, facilitating discussions on the core elements of Doxa Deo’s vision, mission, message and calling.



The first stage focuses on the transformation of the individual into a City Changer. This transformation is based on the following four concepts:

- **Christ’s Invitation (ABC)** – It begins with creating environments and moments where people can become **AWARE** of their inclusion in The Beloved. **BELIEF** is a natural response to this awareness, leading to **confession** and **COMMITMENT** to Christ, embracing the new life made available to us in Him.
- **Knowing God (KG)** – From there, the journey continues. The believer’s **identity** in Christ is established through **IDENTIFICATION** with Christ. A lifestyle of **INTIMACY** with God and **INTEGRITY** as a believer becomes possible through the Holy Spirit.
- **Loving People (LP)** – A natural outflow of this new identity is expressed through genuine **COMPASSION**, discovering one’s **CALLING** to minister to others and passionately making a **CONTRIBUTION**.
- **Impacting my World (IMW)** – Finally, making an impact is expressed through a secure grasp of what it means to engage with all of life from a Christ-centred **WORLDVIEW**. In our everyday **WORK**, we take a stand for the completed work and victory of Christ, intentionally engaging our world for the sake of its **WHOLENESS**.



The following information is provided as a brief layout of the primary focus of each module or session over the next 2 years.

CCEP MODULE 00 – FOUNDATIONS



Foundations 1

FND 1. ASKING THE RIGHT QUESTIONS - AN INTRODUCTION to CCEP

Asking the right questions

Every successful endeavour starts by **asking the right questions**. The obvious outcome of any discipleship process needs to provide answers for the question **'HOW DO I LIVE as a disciple of Jesus Christ?'** This session provides some basic vocabulary and imagery for that discussion and all of the sessions that lie ahead. It also introduces us to the **Doxa Deo Message** and its different components, providing the framework on which our discipleship processes are run.

Foundations 2

FND 2. THINKING WITH GOD

What lenses am I using to deal with life?

If our lives are to align with God's purposes, we need to get our thinking straight. To that end, this session exposes the **assumptions** at the foundation for our thinking. It challenges us to begin with the **absolutes** of Scripture, the written record of *what God has already said and done*. It shows us how to apply sound Biblical principles in the **interpretation** of what has been revealed so that we can fully grasp the implications of His truth as it applies to our given situation.

History has shown us that when the church attempts to teach or apply Biblical principles within a *Dualistic* or *Syncretistic worldview*, it inevitably undermines the credibility of the Gospel and limits the impact of Christianity in a community. In this session, we briefly look into some of the **Basic Elements** underlying the **WORLDVIEW of Biblical Christianity**. Using the metaphor of the **Iceberg** to assist us, we can engage in various *conversations at different levels* – what do we need to *know* about the nature of **Reality?** ... why do we *believe* what we believe (and how do we know that it is **True**)? ... what leads us to *value* certain things as being **Good**?

Foundations 3

FND 3. THE GOSPEL OF JESUS CHRIST

Why is The Gospel such good news?

In this session, we are reminded that the Gospel truly is GOOD NEWS. Embracing the Gospel on any basis other than *'not DO but DONE'* will prevent us from experiencing the *full impact* of **what God has done for us in Christ** – whether it be personally, corporately, or cosmically. It is from this foundation that we approach every process in Doxa Deo, experiencing the **impact** as well as expressing the **implications** of the Gospel.

Foundations 4

FND 4. THE LIFE-STORY OF A CITY CHANGER

How do I go about changing my world?

This session provides a brief overview of **Doxa Deo's Message FRAMEWORK**. Every *City Changer's Life* tells the same Story; and every transformed life is a living **invitation to Christ** for those who do not yet know Him. As city changers, we are passionate about **Knowing God, Loving People** and **Impacting Our World**.

As City Changers, we are a **Family on Mission**:

- we live to **Reach the Lost**, igniting **Faith** in *spiritually lost* and darkened hearts.
- we live to **Heal the Pain**, engaging the *relational pain* of our communities with His **Love**.
- we live to **Restore what's Broken**, bringing **Hope** into a world where *systemic brokenness* has hampered or dismantled effective structures and disrupted so many lives.

CCEP Module 01 - Knowing God: IDENTIFICATION

Jesus defined the essence of life in terms of KNOWING GOD (John 17:3). The Psalmist points out that it is in seeing God for who He is that we discover who we truly are (Psalm 36:9). The New Testament writers remind us that our true IDENTITY is rooted in our IDENTIFICATION with Him (2 Corinthians 3:18 & 5:17; James 1:23-25). When we fully IDENTIFY with the One in whose image we are created, we find ourselves being restored to the quality of life He intended for us.

KG 01 – IDENTIFICATION



KG 1.1 PAUL'S LETTER TO THE ROMANS

What's so important about Paul's letter to the Romans?

This letter to the Romans was not the first of Paul's letters written to churches with which he had a strong connection. But it is definitely his most comprehensive in terms of unpacking for his readers the breadth and the depth of THE GOSPEL. In it, we find him raising virtually every theme the New Testament touches on in terms of Theology and Praxis. It is one of the definitive references for the believer's IDENTITY. We draw our **framework** for **IDENTITY in Christ** from this book.

KG 1.2 AN INTRODUCTION TO IDENTITY

What does it really mean to be a NEW CREATION in Christ?

In this session, Doxa Deo's Founder and Visionary Leader unpacks for us the principle of IDENTIFICATION and the IDENTITY of the believer. That conversation takes us into a discussion on the implications of this reality - what does it mean to be a NEW CREATION in Christ?

KG 1.3 MAN, FULLY ALIVE

Jesus said He came to give us 'LIFE AND ABUNDANCE'. What does that mean?

The uniqueness of Biblical Christianity does not lie primarily in its doctrines or its ethical framework. It is inseparably bound to THE UNIQUENESS OF JESUS. Once we make the shift from seeing Him as AN example FOR Man to seeing Him as THE example OF Man, the way we understand HIM changes. Christianity is not primarily a 'DO' conversation – its teachings are firmly rooted in the 'DONE' category. From that foundation, conversations on things like sin & grace change entirely. Added to that, any guiding principles that we embrace – about what it means to be HUMAN – that do not start at what God has 'DONE' in Christ will soon be doing us more harm than good. Embracing THE CHARACTER OF CHRIST, we discover the glory of God is truly MAN FULLY ALIVE.

KG 1.4 RIGHTEOUSNESS

Is it possible to live a righteous life effortlessly?

Paul's statement in Romans 1:16-17 takes us to the very essence of what the Gospel is and does. Its core characteristic is rooted primarily in RIGHTEOUSNESS, the righteousness of God. GRACE tells us what God has done *for us* in order to make us righteous – as righteous as He is (2 Corinthians 5:21). FAITH tells us what it means to respond to God's grace and be considered righteous (Romans 1:17; Ephesians 2:8-9). The Gospel brings us the revelation of how *the righteousness of GOD* (belonging *to* God, emanating *from* God, imputed *by* God) became the identifying characteristic *of MAN*. It reveals to us the way the Father sees His sons and daughters; the way the Son sees His Bride; the way the Spirit sees His temple (residence).

KG 1.5 SONSHIP

Can the descendant of a rebel, the son of a slave, ever be fit to rule as a prince of realm?

The custom of adoption, as we know it in our 21st century setting, gives us important imagery and vocabulary for understanding our legal position – or 'legitimate' standing – in the family of God. Of course, there was far

more connected to this custom in the 1st century world than what we find in the modern era's practice of adoption. In this session we delve into the understanding from which Jesus and the Apostles were working when they spoke of what it means to be a 'son' and 'heir' of God.

KG 1.6 DIVINE EXCHANGE (Part I) - THE DOXA DEO RESTORATION MODEL

Is WHOLENESS an attainable goal in this life?

In this session we discuss the implications of DIVINE EXCHANGE (Romans 5:17) on our personal WHOLENESS. The Doxa Deo RESTORATION MODEL reminds us that our approach to personal restoration needs to be aligned with God's opinion of *what we already are* in Christ. Beginning at any point other than our IDENTITY IN CHRIST will soon have us caught up in well-meaning efforts at removing what we perceive to be obstacles in the way of wholeness. But removing the obstacles will not necessarily guarantee restoration. 'Fixing' the 'Adamic nature' in man can never bring a human life to a place of wholeness. We need to begin with the end in mind - *God's definition* of what it means to be 'whole' – CHRIST.

KG 1.7 DIVINE EXCHANGE (Part II) - DEALING WITH GUILT, SHAME and PAIN

What is the DIVINE EXCHANGE principle ... and how does it affect me?

As long as we accept GUILT, SHAME and PAIN as valid reminders of our 'flawed' existence, we will never live in the fullness of our IDENTITY in CHRIST. Inherent in the finished work of Christ is the DIVINE EXCHANGE principle by which our GUILT, SHAME and PAIN has been addressed. In this session we look further into the 'mechanism' that Paul offers us in Romans 6 by which we appropriate the GRACE, RIGHTEOUSNESS and AUTHORITY that is ours in Christ.

CCEP MODULE 02 - KNOWING GOD: INTIMACY

It has been said that we could never desire INTIMACY with someone that we do not consider our equal. The fact that Christ desires INTIMACY with us speaks volumes about our IDENTITY. Christ shed His blood for us not only so that we could be redeemed from a sin-dead past or saved from a dead-end future. He gave His all so that we too might know the same quality of INTIMACY with the Father that He Himself enjoys. The distance between Man and God was cancelled at the cross with the cry - 'IT IS FINISHED!' The presence of the Comforter Himself within us confirms that we are of *His* kind.

KG 02 - INTIMACY



KG 2.1 THE GOSPEL OF JOHN

Why was a fourth Gospel needed? What's so different about the Gospel of John?

In the view of leading New Testament scholar Darrel Bock, the Synoptic Gospels (Matthew, Mark & Luke) are telling us the story of Jesus *from the earth up*; John's Gospel is telling the story of Jesus *from heaven down*. The disciple whom Jesus loved introduces us to the reality of what INTIMACY between God and Man is like. When God – in Christ – became 'flesh' and 'dwelt among us', we found in Him far more than just *an* example *for* Man. He redefined the human race in becoming THE example OF Man.

As the LIVING WORD, Christ breaks open the TRUTH of the Father's opinion over Mankind. With His FINAL WORD – IT IS FINISHED – He cancels the distance between God and Man that was caused by Adam's Fall, opening up the way to INTIMACY with the Father. Life in all of its fullness – knowing God PERSONALLY and INTIMATELY – has become the default REALITY within which we have been repositioned to live.

KG 2.2 AN INTRODUCTION TO INTIMACY

What is it that makes intimacy with God so appealing and rewarding?

In this session, Doxa Deo's Founder and Visionary Leader unpacks for us the principle of INTIMACY for the believer. That conversation takes us into a discussion on the implications of this reality, asking the question - *what does it mean to live in a love-based relationship with the Father, Son and Holy Spirit?*

KG 2.3 GOD, ME & REALITY

What would life be like if I could see and deal with life's realities from God's perspective?

Knowing God takes us into conversations on His perspectives and priorities. It does not take us long to discover that our own perceptions of what *reality* is like – and how things are supposed to work – are not always aligned with His. Allowing Him to define the terms of engagement for life turns out to be both liberating and exhilarating. Growing in relationship with Him also means learning to trust His perspectives on *God, Me and Reality*.

KG 2.4 AUTHENTIC SPIRITUALITY

What role does the Holy Spirit play in my intimacy with God?

Apart from the Holy Spirit's active engagement, nothing of what the Father has intended or the Son has accomplished **for** us would become a manifest reality **to** us, **within** us or **through** us. The Holy Spirit is not an 'optional extra' available to those believers who are seeking 'more'. His presence is at the heart of a healthy, authentic spirituality, leading us into the kind of liberty that comes from intimacy without shame.

KG 2.5 HEARING THE VOICE OF GOD

Why is it so difficult to clearly hear the voice of God amidst the clamour of everyday life?

The one thing Man never lost through The Fall was his ability to hear the voice of God (see Genesis 3:6-8). Jesus teaches us that our ability to hear the voice of God is absolutely vital to our well-being (Luke 4:4). Conversation with God – growing in our ability to discern His voice and to respond to what He is saying – is a core element of what being intimate with God is all about. In this session we explore the ways in which we have been naturally 'wired' to recognise God's voice and how we should go about responding to what we perceive Him saying to us.

KG 2.6 CULTIVATING A HISTORY WITH GOD

How can I grow in my personal devotion to God?

Much of what we accomplish in life is made possible by way of cultivating a quality lifestyle that is undergirded by healthy habits. Our success is dependent, to a great extent, on our willingness to engage. In this session we identify the routines and habits every believer would do well to establish in growing towards spiritual maturity. Cultivating a history with God calls for engaging with Him in every aspect of life. And in so doing, we discover with ever-increasing wonder the extent of His wisdom, the breadth of His vision, the wealth of His favour and the depths of His love for us.

KG 2.7 THE POWER OF INTIMACY – CASE STUDIES IN THE BOOK OF ACTS

How did the first generation of believers experience the indwelling life of the resurrected Christ?

Jesus understood *what* He was anointed *for* in the light of *Who* He was anointed *by* ... and He anchored this awareness in the Word that the Father had spoken over Him through the prophet Isaiah (see Luke 4:16-20). As His representatives, we have been *commissioned* to *continue* to do in our generation what He *began* to do in His (John 20:21-22 / Acts 10:38). The book of Acts takes us into the story of that first generation of believers who lived out their everyday lives under the *anointing* of the Holy Spirit, changing their world in the process.

MODULE 03 – KNOWING GOD: INTEGRITY

INTEGRITY is closely connected with the inherent capacity that comes with our original design and redeemed nature. That capacity finds expression in our function and behaviour. A lack of understanding of our IDENTITY in Christ, combined with a lack of INTIMACY with God as our Designer, leaves us vulnerable to the influences of the reigning culture. A life of INTEGRITY is the evidence of INTIMACY, the fruit of IDENTIFICATION.

KG 03 - INTEGRITY



KG 3.1 - THE BOOK of NEHEMIAH

What was the secret to Nehemiah's success as a community leader and city changer?

In Nehemiah we see a Kingdom Leader authentically expressing the *character of Christ* and the *Fruit of the Spirit*. In the *integrated* way in which he approaches the totality of his life and calling, embracing the discipline required of personal mastery, he models a life of integrity for us.

KG 3.2 - INTRODUCTION TO INTEGRITY

Where does authentic Christian behaviour begin?

In this session, Doxa Deo's Founder and Visionary Leader unpacks for us the principle of INTEGRITY for the believer – living authentically as those who know our IDENTITY in Christ and who enjoy uninhibited INTIMACY with Him. That conversation takes us into a discussion on the implications of this reality, asking the question – *where does authentic Christian behaviour begin?*

KG 3.3 - THE FRUIT OF THE SPIRIT

How do we explain the anomaly of a believer's life that does not exhibit the fruit of the Spirit?

The saying goes: *'If God didn't put it in you, no amount of coaching will bring it out of you'*. But if God Himself is alive within you, what can keep His life from becoming evident in our behaviour? This session looks into what the New Testament teaches on the motivating energy behind the *Fruit of the Spirit* as it finds expression in our everyday lives.

KG 3.4 - CHOICES: Quality Decision-making

Am I trusting the integrity of my design in the arena of my choices and desires?

How I choose to live is rooted in my understanding of WHO and WHOSE I am. Knowing my IDENTITY in Him lays the foundation for *quality decision-making*. Living in INTIMACY with Him guides my *in-the-moment choices*. Understanding the principles by which He sustains His KINGDOM gives me a reference for *decision-making in 'grey' areas*.

KG 3.5 - LIFESTYLE MANAGEMENT 01: Personal Stewardship

How do I steward my personal responsibilities with integrity?

Having a clear vision of God's purpose for this life is basic to every human being's sense of self-worth (Proverbs 29:18). My life's vision can only make sense when placed in the context of God's Word over my life. In this session we open the conversation on the basic elements underlying personal mastery from this perspective. In answering the WHY question, we live less conflicted by the issues of HOW, WHERE and WHEN.

KG 3.6 - LIVING FROM THE INSIDE OUT

Relationships! - What was He thinking?

None of us comes through childhood and into our adolescent years without our fair share of scrapes and bruises. Surprisingly, some of our deepest wounds come from those we trusted most and from whom we expected it the least. God's heart for us has always been that we should live a full life even in the emptiest of places. Understanding *who* we are – and *Whose* we are – keeps us from entertaining a victim mentality in spite of painful experiences. Intimacy with Him sets us up to live as investors in any relational environment. Knowing *why* He has designed us the way we are lays a solid foundational framework for whole-hearted living.

KG 3.7 – Mentorship & Discipleship

We teach what we KNOW; we reproduce who we ARE

Jesus' Great Commission to His first disciples (Matthew 28:18-20) adds new dimensions to the blessing God spoke over the very first Man - '*... be fruitful; multiply; govern the earth ...*' (Genesis 1:28). Making Kingdom disciples is the only way to truly fulfil that mandate. Every City Changer's benevolent life impacts the lives of those around them. Every disciple that is made, every leader that is raised, every City Changer that is mentored is a valuable contribution toward the prophetic 'end-goal' of establishing the Kingdom of heaven on earth ... that *the glory of God should fill the earth as the waters cover the sea* (Habakkuk 2:14).

CCEP MODULE 04 - LOVING PEOPLE: COMPASSION

COMPASSION is one of the most natural ways of expressing LOVE. The Gospels repeatedly point out that it was COMPASSION that motivated Jesus to engage with those whose lives were in need of God's restorative touch. COMPASSION is love in action.

LP 01 – COMPASSION



LP 1.1 - PAUL'S LETTER TO PHILEMON

Why were the apostles seemingly silent on the issue of slavery?

Paul's letter to Philemon lays the groundwork for our conversations on COMPASSION. In literally a few short paragraphs – and without a single reference to the institution of slavery – he unmasks the distorted references enshrined in the culture of the day when it comes to the value of man and the issue of human dignity. We find him reaffirming God's heart for the marginalised and reinforcing the witness of the church as a reference for redeemed and restored community.

LP 1.2 - AN INTRODUCTION TO COMPASSION

Is there a LOGIC underlying God's LOVE?

In this session, Doxa Deo's Founder and Visionary Leader unpacks for us the power of COMPASSION as the expression of LOVE. That conversation takes us into a discussion on the implications of this reality, asking the question – *why does COMPASSION – authentic LOVE in action – come so naturally to the human heart?*

LP 1.3 – GRACE, TRUTH and JUSTICE

Why do we instinctively expect to find truth, grace and justice in the world around us?

The nature of REALITY is rooted in the character of its Creator, the One who is LOVE (1 John 4:8). Our interaction with each other can never be determined by racial, socio-economical or even gender-based considerations. We have His word over our lives, an opinion that ranks us higher than any other reference has to offer. Knowing the value of Man in God's eyes is the basis for a culture in which we give honor because honor is due.

LP 1.4 - GRACE and MERCY

What's the connection between COMPASSION, GRACE and MERCY?

In this session, we explore the dynamics of two of the core drivers of COMPASSION – GRACE and MERCY. Discovering these aspects of the LOVE of God is truly liberating. And grasping the revelation of His heart for us informs the way we engage relationally with those around us.

LP 1.5 - RELATIONSHIPS 101 - MARRIAGE

How relevant is the institution of marriage in a post-modern, post-Christian society?

In this session we investigate the reason behind God's idea of marriage. In the light of fast-mounting evidence, it is becoming all the more obvious that cultural stability slips beyond our grasp once we remove the institution of heterosexual marriage from society. Marriage is far more than a social contract or a cultural construct. It is the very foundation on which society is built. Despite political objections to the contrary, we cannot escape the evidence that this is what we were designed for.

LP 1.6 - RELATIONSHIPS 201 – EQ in a broken world

How does compassion factor in to our EQ as believers?

Loving people in mature ways calls for a capacity to go beyond the expected, and even the accepted 'transactional' norms for relationship within the reigning culture. Real relationships will always place a demand on our **EQ** (*Emotional Intelligence; Emotional Quotient*). Although compassion is at the core of our new design, we need to grow in our ability to understand, use, and manage our own emotions in positive ways – reducing stress, communicating effectively, empathizing with others, overcoming challenges and defusing conflict.

LP 1.7 - FAITH, LOVE, HOPE – THE MICAH MANDATE IN ACTION

How does COMPASSION motivate us to engage in social restoration?

In 2 Corinthians 5:14-21 Paul connects some vitally important dots for us. Because we have discovered how deeply loved we are, we cannot help but reach out to others with this life-changing truth: *that God – in Christ – has reconciled the world to Himself*. Compassion leads us to engage with those who are spiritually lost in order to ignite their FAITH in God. Compassion leads us to engage with those who have suffered relational pain in order to bring healing in the LOVE of Christ. Compassion leads us to engage with those whose lives have been disrupted by systemic brokenness with a desire to inspire them with Godly HOPE.

CCEP MODULE 05 - LOVING PEOPLE: CALLING

The way to life in all its fullness is found when we embrace what HE has already DONE. Finding and living out our CALLING can therefore never begin with who we are and what we wish to accomplish in life. What we are CALLED to do in this life follows naturally on the heels of our IDENTIFICATION with Him. Our CALLING is rooted primarily in responding to what He has already DONE, partnering with HIM in what HE is now DOING.

LP 02 - CALLING



LP 2.1 - PAUL'S LETTER TO THE EPHESIANS

Is it our calling we should be busy with? Or His calling? And how do the two relate?

Paul's letter to the Ephesians provides one of the clearest New Testament conversations on the nature of CALLING. In it he lays the foundation for our understanding of Christ's calling as our *Saviour* (Ephesians 1-3a), *Lord* (Ephesians 3b-5a) and *Heavenly Bridegroom* (Ephesians 5b). In doing so, he addresses the implications of this on *us* as believers – that we should walk worthy of HIS calling in the expression of OUR personal calling, both within the church and in the community. From that point of departure, Paul takes the conversation into the ways in which the CHURCH fulfils HER calling in this world.

LP 2.2 - AN INTRODUCTION TO CALLING

How can I know and grow in my calling?

In this session, Doxa Deo's Founder and Visionary Leader unpacks for us the nature of CALLING for the believer – engaging authentically with others as those who know Christ's calling over our lives and embracing the uniqueness of the gifts and talents He has invested in us. The conversation takes us into a

discussion on the implications of these truths, particularly in the way we empower others to walk in *their* calling.

LP 2.3 - PERSONAL DEVELOPMENT PLAN (Part 1)

What discoveries have you made about the ingredients of your call?

Walking authentically in our God-given calling is the privilege and responsibility of every believer. Paul encourages us as believers to *make a careful exploration of who you are* (Galatians 6:4 MSG) in order to walk worthy of that calling. In this practical session, we consider from a Trinitarian perspective – using a variety of tools – the ingredients that make up one’s calling.

LP 2.4 - SIN, TEMPTATION and THE POWER OF PERSONAL VISION

What role does our personal vision play in keeping us from falling for temptation?

Removing the confusion around what SIN is and does simplifies so many other conversations. It unclutters the issue of TEMPTATION. It lifts the veil on the impact of Christ’s finished work, placing both sin and temptation in the context of the revelation of our RIGHTEOUSNESS in Christ. And it re-establishes the value of PERSONAL VISION as a powerful ally in walking worthy of God’s CALLING over our lives.

LP 2.5 – THE TRANSFORMATIONAL POWER OF A RENEWED MIND

Is the key to our well-being really ‘all in the mind’?

Restoration in the life of every human being has been fully provided for in the completed work of Christ. Personal restoration begins with our own choice to embrace what He has done. Restoration becomes a continual, transformational reality for each one of us as we align our mind – the way we think and perceive things – with the Truth of what God designed us to be. Without engaging the mind in the transformation process, we will never become ... **fully mature adults, fully developed within and without, fully alive like Christ** (Ephesians 4:13b MSG).

LP 2.6 - PERSONAL DEVELOPMENT PLAN (Part 2)

What have you discovered about the uniqueness and authenticity of your call?

Exploring the unique qualities, gifts and passions God has placed within each individual believer, one gets to appreciate the unique work of art you are (Psalm 139:14). Realising that you are truly one of a kind empowers you to live without fear or comparison. The book of Ephesians reminds us that God has planned each of our destinies in advance. He has prepared good works for each of us to do. This practical session facilitates powerful discussions and creative elements to make further discoveries regarding your authentic calling.

LP 2.7 - SAINTS, SONS & SERVANTS

Isn’t it amazing to see how embracing the calling of God over one’s life can turn sinners into saints, orphans into sons and rebels into devoted servants of the King?

Our calling as SAINTS tells us something about the life of *righteousness* into which the Father has called us by His grace. Our calling as SONS tells us something about the *authority* that we have been called to walk in through our inclusion in the resurrection and ascension of Christ. And our calling as SERVANTS tells us something about the attitude in which we live out our righteousness and authority, empowered by the Holy Spirit to compassionately transform the lives of those around us.

MODULE 06 – LOVING PEOPLE: CONTRIBUTION

Knowing that LOVE is best displayed by giving, the lifestyle of the City Changer is naturally characterised by the CONTRIBUTION we make as we engage with those around us.

LP 03 – CONTRIBUTION



LP 3.1 – PAUL’S LETTERS TO THE CORINTHIANS

What role does the local church play in transforming consumers into contributors?

In Paul’s letters to the Corinthians, he touches on a variety of principles that provide a Christ-centred framework for leadership and ministry in the local church. It is within the context of a healthy local church (the Body of Christ; the Temple of the Holy Spirit) that believers are encouraged to grow from consumer to contributor. It is here that they are given the best opportunity to develop their own God-given talents and leadership abilities. The church is the training ground for any City Changer to become a Christ-like contributor within society.

LP 3.2 - AN INTRODUCTION TO CONTRIBUTION

Givers & Takers – which one are we by nature?

In this session, Doxa Deo’s Founder and Visionary Leader takes us into the essence of our CONTRIBUTION as City changers – engaging generously with others as people who live with God’s priorities in mind. The conversation takes us into a discussion on the implications of these truths, particularly in the way we empower others through our Kingdom-minded contributions.

LP 3.3 - AN INTRODUCTION TO CHURCH & KINGDOM

Can we consider the church still to be a relevant role-player in our post-Christian society?

When we understand the purpose of the Church, we see how significant a role she was intended to play in society. The metaphors that Jesus and the Apostles employ in describing what the church is like (a *Body*; a *Family*; a *Household*; etc) provide a foundation for the ‘Rules of Engagement’ in every facet of life in community. The Biblical principles governing relationships, mentorship and eldership in the local church provide an excellent framework for leadership in the community at large.

Is the ‘Kingdom of God’ a meaningful metaphor for life in a post-Christian, democratic culture?

Jesus spoke more about the Kingdom of *God* (a reference to its *Sovereign*), or the Kingdom of *Heaven* (a reference to its *source of authority*), than any other topic he addressed. He clearly considered The Kingdom of Heaven to be the most meaningful context for a fulfilled life on earth. Unlike the self-serving systems driving the kingdoms of this world, the Kingdom of God is *fundamentally benevolent*. The values of Heaven’s Kingdom are rooted in the character of its King. It thrives because its King is a GIVER. His selfless, sacrificial love has enriched us, providing us with access to all the fullness of heaven’s resources. His own energy sustains every Kingdom Citizen’s life, empowering each one of us for victorious living.

LP 3.4 - LIFESTYLE MANAGEMENT 02: STEWARDSHIP in the Kingdom Of God

Why is it important that we learn how to steward our resources well?

Our benevolent Father has no intention of keeping His best from us. Out of His generosity, each one of us has been given *Time*, *Talents* and *Treasure* to steward. As we grow in character and competence, proving ourselves to be trustworthy in personal responsibilities, His trust in us increases. Knowing that success is often a greater test of character than failure, as sons and daughters of God, and heirs of His Kingdom, we are called to grow in our understanding of *what* our Father values and *why*. We have opportunities on a daily basis for revealing the heart of the Father to those around us through the way we steward our resources. Knowing His heart guides us in quality decision-making on how best to deploy the resources we have at our disposal.

LP 3.5 PERSONAL DEVELOPMENT PLAN (Part 3)

In what ways will your calling find expression in your everyday life?

Making discoveries regarding your personal calling is the first part of the equation. Walking it out in a manner that pleases the Lord takes things to the next level. The book of Galatians urges us to not just hold it as an idea in your head or a sentiment in your heart. Instead, the believer is encouraged to work out its implications in every detail of his life. In this practical session, we consider through reflection and interactive conversations how to walk out our calling in the next season of life.

CCEP MODULE 07 - IMPACTING MY WORLD: WORLDVIEW

So much of the technology we have become used to in our 21st century lifestyle was born – and subsequently developed – in the process of 20th Century space exploration. That, in itself, would never have been possible if mediaeval science had not made the paradigm shift away from a *geocentric* understanding of our solar system (the earth is the centre) towards a *heliocentric* model (the sun is the centre). Although a geocentric worldview seems to correspond with our human *experience* (we see the sun circling the earth as it rises & sets each day), it is inconsistent with the nature of *REALITY* (the earth revolves on its own axis as it orbits the sun). Similarly, although there are Worldviews and perspectives in different cultures that seem to correspond with our human experience, only the Worldview of Biblical Christianity sets us up to engage with life in alignment with *REALITY* as God has defined it. Making the paradigm shift away from an *ego-centric worldview* to embrace a *CHRIST-CENTRED WORLDVIEW* is essential if we want to live accurately, *IMPACTING OUR WORLD* in God-intended ways.

IMW 01 - WORLDVIEW



IMW 1.1 – PAUL’S EPISTLE TO THE COLOSSIANS

Is the worldview of Biblical Christianity congruent with reality?

In his letter to the Colossian Church, Paul takes his readers back to the foundation from which God has chosen to work in dealing with reality – Christ. In this, the most comprehensive of all his letters, Paul provides ‘handles’ for his readers on the nature of *reality* and the Truth that is the foundation for our *beliefs*. Showing up every other religion, worldview and philosophy for the sham that it is, he presents us with the cosmic scope of God’s restoration plan in Christ.

IMW 1.2 - AN INTRODUCTION TO WORLDVIEW

Does what I believe to be true about the world really matter to God?

In this session, Doxa Deo’s Founder and Visionary Leader unpacks for us the importance of approaching life from a Christ-centred *WORLDVIEW*. Beginning with *Creation*, the *FULL GOSPEL* addresses *The Fall*, encompasses *Redemption* and presents us with God’s plan for the *Restoration* of ALL things in the light of His original intent – both for humanity and for creation. That conversation takes us into a discussion on what the Gospel teaches about God’s process of Cosmic Reconciliation.

IMW 1.3 - FAITH AND REASON

On what grounds can we claim that what we believe is The Truth?

Conversations on *TRUTH* go awry when we work from an inaccurate *Worldview*. Every part of life needs to be seen through the lens of God’s purpose for its existence *in relation to Christ*. He is the *LOGOS*, the *fundamental idea* – the *rational pattern* in creation, the *order of the universe* – the *prototype* underlying all that exists. As the author of *LIFE*, His Word is definitive for every aspect of reality. He has something to say about *EVERY* part of life. His *LOGOS* provides the parameters of our *LOGIC*. When we remove Him from the conversation, nothing we have to say will ever ring true.

IMW 1.4 - WORLD RELIGIONS: Truth, Faith & Diversity

Don’t ALL religions lead us to God?

When we back up and view the broad canvas of life, it becomes easy to assume that most religions are painting us the same picture. But when we come closer, the brush strokes of the master stand out as clear as day, making those of the forger glaringly obvious. If we want to live accurately and purposefully in this life, we will need to be able to discern the authentic *color of truth* in the midst of a palette of very appealing

falsehoods. And as Christ-following City Changers, we grow in getting to know – and to show – the difference between walking by *faith* and walking by *sight*.

IMW 1.5 - CONVERSATIONS ON CULTURE – PART 1 UNDERSTANDING GOD’S DESIGN FOR HUMAN CULTURE

If culture was God’s idea, how do we explain – and address – the evil in our communities?

In this session we identify God’s good intentions behind His designing human culture to work the way He did. Scripture helps us further to identify the dark source and the disruptive nature of the things that undermine the good that God has ‘sown’ into human society (see Matthew 13:24-30 and John 10:10a). This awareness prepares us to address that which is opposed to God’s will in embracing God’s way. Those who embrace His way begin to see their world and their relationships for what He intended them to be. His is the only worldview that can take us on the road towards wholeness, becoming agents of change in the community.

IMW 1.6 - CONVERSATIONS ON CULTURE – PART 2 THE LGBTQIA+ AGENDA

What is the connection between ‘wholeness’, ‘self-worth’ and ‘well-being’?

The intrinsic value of a human life is directly connected to its *origin* as well as to the fullness of its realised *potential*. On both counts, Christ is the ‘yardstick’. We reinforce pain and brokenness by embracing an identity or pursuing a lifestyle that is not aligned with our Creator’s opinion of our *value* and the creative *purpose* He intended for us. In this session we investigate the claims and aims (and fall-out) of some of the cultural trends that are widely influencing the well-being of our communities.

IMW 1.7 - CONVERSATIONS ON CULTURE – PART 3 THE SOCIAL JUSTICE AGENDA

How is it that Christianity has come to be considered one of the greatest stumbling blocks in the way of the aspirations of people of color in their desire for equality and social justice?

In a post-Christian culture bent on eradicating the memory of the foundation on which it was built, Christianity often gets the blame for the injustices prevalent in society. But Christ is both the foundation of our human identity as well as the ‘yardstick’ for what it means to act justly. When any other reference is chosen as the measure of Man, injustice is bound to become rife. In this session we continue to investigate the claims and aims (and fall-out) of some of the cultural trends that are widely influencing the well-being of our communities in the pursuit of equality for all in a just society.

CCEP MODULE 08 – IMPACTING MY WORLD: WORK

The Good News of Heaven’s plan for Man is the most natural place to start in bringing heaven’s solutions to bear on the problems we encounter here on Earth. Being heavenly-minded – WORKING within our world from a CHRIST-CENTRED WORLDVIEW – is essential if we want to be of some earthly good.

IMW 02 - WORK



IMW 2.1 - THE BOOK OF JAMES

How does being ‘heavenly-minded’ translate into doing ‘earthly good’?

James, the half-brother of Jesus (Mary was their mother) and the leader of the first Church in Jerusalem, led his congregation through some of the most aggressive religious and political persecution any church has known. The fruit of their faith transformed that community into a worldwide missional movement. With an energy and an urgency, James reminds us as believers about our active role in this world as change-agents. In his down-to-earth, holistic way, James challenges a Christianity that separates (Sunday’s) faith from (Monday’s) work. Our Theology always influences our methodology. Good works – which includes being GOOD at your WORK – is the *evidence* of a faith-based life.

IMW 2.2 - AN INTRODUCTION TO WORK

Isn't 'work' part of the curse that came as a result of Adam's sin?

In this session, Doxa Deo's Founder and Visionary Leader unpacks for us the importance of a Biblical foundation in our approach to Work. When God is at work in and through us, our work is honourable. Working with a view to pleasing Him transforms our *work* into an act of *worship*. And work becomes the way in which the whole church is commissioned to make a difference in the whole world. That conversation takes us into a discussion on the ways in which our constructive engagement in any given sphere of society enriches our community, causing our city to flourish.

IMW 2.3 - PROBLEM-SOLVING

What is it that I really want at work ... and why?

The quality of the solutions we propose for the problems that plague our workplace and our community's productivity are directly related to the quality of the questions we are prepared to ask. Partnering with God begins when we acknowledge His desire within us to pursue His solutions to these problems. 'What do I want?' is qualified by knowing what He wants. Making my desires known to Him in prayer positions me to clarify my expectations and purify my motives. Then, seeing my work from His perspective, I can make His desires known to my world in practical ways.

IMW 2.4 - ENGAGING GOD'S WORLD THROUGH MY WORK

In what way can we overcome the barriers that cultural diversity has placed in the way of communicating the TRUTH of Christ's AUTHORITY in our world?

Love is foundational to our engagement as leaders in the community. Love motivates us to take *responsibility*. Love sensitises us to engage with compassion, knowing to Whom we are to give *account* for our actions. Love is the best form of 'apologetics' because love – compassion in action – translates truth into any and every language. Working in ways He considers beneficial for our community opens up grace-based avenues for the truth to be made known.

IMW 2.5 - ETHICS IN THE WORKPLACE

Whose standard of 'good' is shaping our good endeavours?

If the greatest commandment of all is rooted in LOVE, our work in this world should bring about beneficial results for the people of our community, irrespective of their social standing and religious convictions. Because we love others as Christ loves them, we hold ourselves accountable to His standards in all of our actions, taking responsibility for their well-being through our well-doing.

IMW 2.6 - LIVING CREATIVELY

What does it mean to 'be fruitful'?

One of the elements in God's mandate for man (Genesis 1:28) is that as creatives we represent the Creator. His blessing – 'be FRUITFUL' – included the sanctified use of the imagination and the release of divinely-inspired creativity. Engaging all of LIFE from the paradigm of *intelligent design*, we are well set to live creatively, bringing Godly inspiration into our work with creative solutions for complex situations. As *incarnational creatives*, we live inspirationally; we speak prophetically into prevailing conditions; we engage positively with fellow-labourers; we work constructively towards Godly outcomes for the arena of our functioning.

CCEP MODULE 09 – IMPACTING MY WORLD: WHOLENESS

Jesus' personal mission set the platform for all of mankind to regain what Adam lost (Romans 5:17). It also laid the foundation for cosmic restoration, activating the reconciliation of every aspect of creation back to the Father. Knowing what's wrong with our world – and why – helps us to work with intentional focus toward restoring what's broken. Bringing WHOLENESS into our world has now become the personal privilege of every City Changer. We are Christ's ambassadors, ministers of reconciliation, drawing people's lives – and the processes that shape the quality of their lives – back into alignment with the heart of the Father.



IMW 3.1 - OLD TESTAMENT WISDOM LITERATURE

What's the connection between Wisdom and Wholeness?

Jesus points out to us that our lives become misaligned and disrupted when we remain ignorant of God's Word and Way (Matthew 22:29). Doing what God says, living the way He intended, has practical benefits for the individual and the community at large. Knowing that Christ is *The Wisdom of God* (Colossians 2:2-3), and that all of Scripture is telling us *His Story* (John 5:39), should provide us with an accurate lens for interpreting Old Testament Wisdom literature. Between them, Job, Proverbs and Ecclesiastes address every major theme at the heart of our human experience. They help us lift the veil on the nature of WISDOM, the question of SUFFERING and the implications of our CHOICES.

IMW 3.2 - AN INTRODUCTION TO WHOLENESS

What shifts do we need to make in our thinking before we can truly bring change to society?

In this session, Doxa Deo's Founder and Visionary Leader takes us into a conversation on what it requires of us to live with a vision for the wholeness of the community in which we are planted. We discover 'Shalom' as being far more than just the absence of the negative; it refers to the presence of wholeness, fullness, completeness. This places God's word to an exiled Israel in Babylon (the familiar promise of Jeremiah 29:11) in a whole new light as He challenges Israel's secular worldview. 'Seek the *shalom* of the city in which you find yourself', He admonishes, 'for in its prosperity you will have *shalom*' (see Jeremiah 29:7). From this foundation we engage in a discussion on what it means to pastor a community, engaging with our city for the sake of its *spiritual, relational and cultural* restoration.

IMW 3.3 - THE GREAT COMMISSION: DISCIPLING THE NATIONS

What does it mean to 'live questionable lives'?

The life, death and resurrection of Jesus has been impacting lives for millennia. The primary mechanism by which that impact has been made possible has been the evidence of changed lives. This is the basis on which the Great Commission has remained the most effective mandate in human history (Matthew 28:18-20 / Mark 16:14-20 / Acts 1:8). The Apostles model for us the way in which we are to approach this mandate – with a *readiness to explain to those who question us* on the reason for our FAITH and the HOPE it brings – in LOVE (1 Peter 3:15 / Philippians 2:14-16).

IMW 3.5 - CROSS-CULTURAL MINISTRY

What does God's picture of a multi-ethnic, cross-cultural community look like?

Even though every culture may be fallen, we are aware that God, in the vastness of His wisdom, has invested different elements of His uniqueness in every individual, family, culture and nation in every generation. As believers from different ethnic backgrounds in a community, we embrace the truth that our ethnic diversity and individual uniqueness is a window into the multifaceted nature of His character. Rather than seeing those differences as barriers or boundaries that keep us separate, we choose to embrace Christ's perspective on the obstacles in the way of unity in community. We use our common goals and communal values in Christ as bridges that facilitate true unity from the heart. The Kingdom of God becomes a manifest reality in communities where we love one another as He loves us, leveraging our personal influence and affluence as avenues of blessing and empowerment. Grace trumps race at every point.

IMW 3.5 - CREATING A JUST SOCIETY

Is there a way to structure a society so that everyone is afforded true justice?

As long as the Prince of Peace, the Judge of all the earth is being kept out of the conversation, justice for all will remain a pipe dream. As long as our definitions of justice are flawed, no matter how we construct society,

social justice will invariably become a mechanism to enable injustice. It is essential for us as City Changers to discover what Scripture has to say about the nature of God's justice system, the framework He provides for bringing wholeness for individuals, families, communities and nations. A brief look at the 10 commandments will provide us with valuable insights into God's heart for a just society. Knowing His heart, we can engage in exploring what the Micah mandate means for 21st Century society and what it looks like when we 'act justly' (Micah 6:8).

IMW 3.6 - BEING A FATHERING, FAITHFUL AND FRUITFUL PRESENCE

What is 'Incarnational Evangelism'?

When Christ the Word was incarnated – becoming flesh and dwelling among us – He gave Mankind an opportunity to experience God on a personal level. We, too, have been mandated to reveal the Father's heart to our world, drawing their attention to the restorative power of His *grace* and *truth*. The posture we take in relation to our world often determines how people interpret our Father's heart for them. By our *fathering* presence, we reveal that He cares about the people with whom we engage. By our *faithful* presence we actively intercede for them in prayer, humbly trusting in Him to reveal His grace to them in our interactions. By our *fruitful* presence, we reveal His Kingdom values in every good endeavour in every social arena.

For more information, please contact our office:

Administrator: Elaine Grobler elaine.grobler@cci.ac.za

Website: <https://www.doxadeo.org/cci/>

